

A *New* Chapter In

il **BAYOU**
SAHL HASHEESH

LAGUNA
SAHL HASHEESH





COMMITTED
TO YOU

30 YEARS

OF LISTENING TO WHAT A CLIENT NEEDS

At TLD, our mission transcends beyond building structures; we are passionate about creating homes and memories. Each project is a labor of love, designed to evoke warmth and security. For three decades, we've been dedicated to crafting exceptional real estate experiences and embracing international standards of modern living.

Driven by our commitment to our clients, we aim to build legacies for generations to come, fueled by innovation that redefines the landscape of real estate.

About *il* BAYOU

SAHL HASHEESH

il Bayou is a fully serviced compound at Sahl Hasheesh, Red Sea, with a divine, calm, and serene nature that calls for meditation and a state of complete tranquility.

With the success of il Bayou igniting our passion, we were driven by our passion to this enchanting project to expand it and introduce il Bayou extension—an ode to seaside living at its finest.

At the new extension, we're excited to bring you even closer to nature. A space designed to awaken your senses and offer moments of pure relaxation. It's a haven where you can escape the daily grind, find peace, and truly enjoy life's simple pleasures with the beach only 350 meters away.

A truly dynamic and a unique getaway experience by the sensational Red Sea, that TLD will continue to evolve and grow into.

Location



Comfortable walking distance to beach



6 Min drive to Sawari Marina



9 Min drive to the Old Town



15 Min drive to The Airport



35 Min drive to Hurgada City center



45 Min drive to El Gouna

Old Town Sahl Hasheesh

il BAYOU
SAHL HASHEESH

Sawari Marina

il BAYOU *New Story*

SAHL HASHEESH

Divided into five distinct zones, each area boasts its own unique character and color palette, creating a vibrant tapestry of diversity within the development. Just as colors evoke different emotions and energies, each phase of il Bayou embodies the spirit and the energy of its assigned color.





Chapter 1

Laguna is a soft, sandy yellow shade laguna invites residents to indulge in the earthly pleasures of sandy beaches and lagoons kissed by gentle waves.

Chapter 2

Jade is a rich, deep green with a hint of blue Jade unveils lush greenery, echoing Bali's landscapes, with recreational zones inviting residents to rejuvenate through yoga amidst soothing blue hues.



Chapter 3

Sage is a soft, muted earthy green Sage is meticulously tailored to meet the needs of seniors, providing a sanctuary of comfort and care to ensure a fulfilling and enriching experience.



Chapter 4

Amber is a warm, golden-orange Amber bursts with vibrant energy, drawing residents into a dynamic atmosphere filled with a communal pool and countless spirited activities.



Chapter 5

Capri is a vibrant, deep shade of sky-blue Capri phase unveils villas adorned with infinity pools reflecting the serene blue skies, offering a retreat immersed in calmness and peace.



Amenities





**Year-Round
Destination**

L35
architects

**Designed By
"L35 Madrid"**



**Serviced
Units**



**Fully Finished Villas
With Private Pools**



Elder-Friendly



Kids Area



**Laundry Service
& Housekeeping**



**First Direct
Beach Access**



**Best Jetty In
Sahl Hasheesh**



Large Pool



Pool-Side Cafes



Yoga Area



**Water Features
And Lagoons**



Lush Landscape



Gym & Spa



**Selective
Community**



Rooftop Cafe



Splash Pads

About **Sahl Hasheesh**

Nestled within an extraordinary natural landscape, Sahl Hasheesh, known as **the jewel** of the Red Sea, stands as an enchanting gem along the Egyptian coast.

il Bayou is a heartfelt connection to nature. Every detail harmonizes with the surroundings, creating a sanctuary of beauty and community. Here, residents don't just live—they thrive, inspired by the landscape and united by a sense of **belonging to nature**.



Sahl Hasheesh *Lifestyle*

Discover the Paradise of Sahl Hasheesh

With 12 kilometers of crystal-clear waters, it boasts the Red Sea's longest private beach. Encounter diverse marine life, thriving in protected waters. With a landscape encompassing coral, sandy, rocky, and tidal pool beaches, Sahl Hasheesh offers a coastal paradise waiting to be explored. Join us at il Bayou and immerse yourself in nature's breathtaking splendor.



Sahl Hasheesh *Tidal Pools*



Sahl Hasheesh *Activities*



LAGUNA

SAHL HASHEESH

Whispers Of *Nature*



About LAGUNA

SAHL HASHEESH

We're delighted to introduce il Bayou's latest phase "Laguna", designed to suit every lifestyle.

From luxurious townhouses and twin houses, each boasting its private pool, to magnificent-view chalets, there's something special for everyone in "Laguna".

This phase invites you to immerse yourself in a tranquil oasis where the elements of earth and water intertwine harmoniously.

Nestled within this phase is a captivating swimmable sandy beach pool. Here, surrounded by inviting sandy shores, the tranquil blue lagoon calls you to take a refreshing dip or simply soak up the warmth of the sun.

But the allure of "Laguna" doesn't stop there. For our little ones, there's a dedicated kids' pool area where they can splash and play to their hearts' content.









L35
architects



L35 INTERNATIONAL
ARCHITECTURE FIRM

When choosing our partners, we always put your needs as our main essence in every step we take; that's why we chose an international firm that guarantees excellence in the design from a perspective of creative freedom, coupled with technical thoughtfulness and the capacity to master all stages of the project from initial sketches to the finished building.

L35 is an international architecture firm with offices in Barcelona, Madrid, Paris, Milan, Geneva, Miami, Mexico, Bogota, Sao Paulo, Santiago, Istanbul and Abu Dhabi.

Where **Dreams Fall Into Place**



Masterplan



Interiors & Finishing



Interiors & **Finishing**



Chalets
Type 1

Street Facade



Chalets **Main Facade**
Type 1



Chalets Ground Floor Plan

Type 1



Gross Area 139

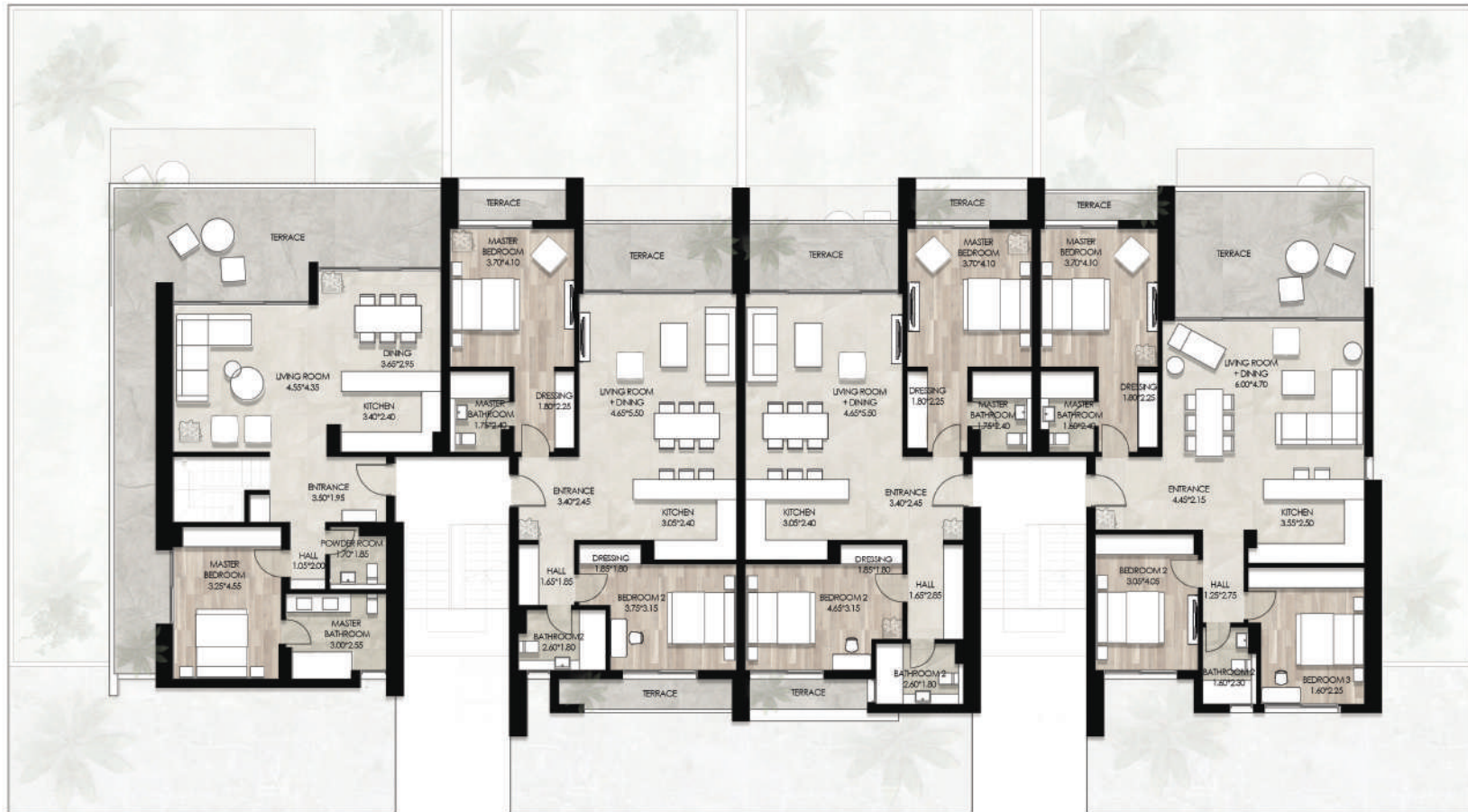
Gross Area 112

Gross Area 112

Gross Area 139

Chalets **First Floor Plan**

Type 1



Gross Area 174

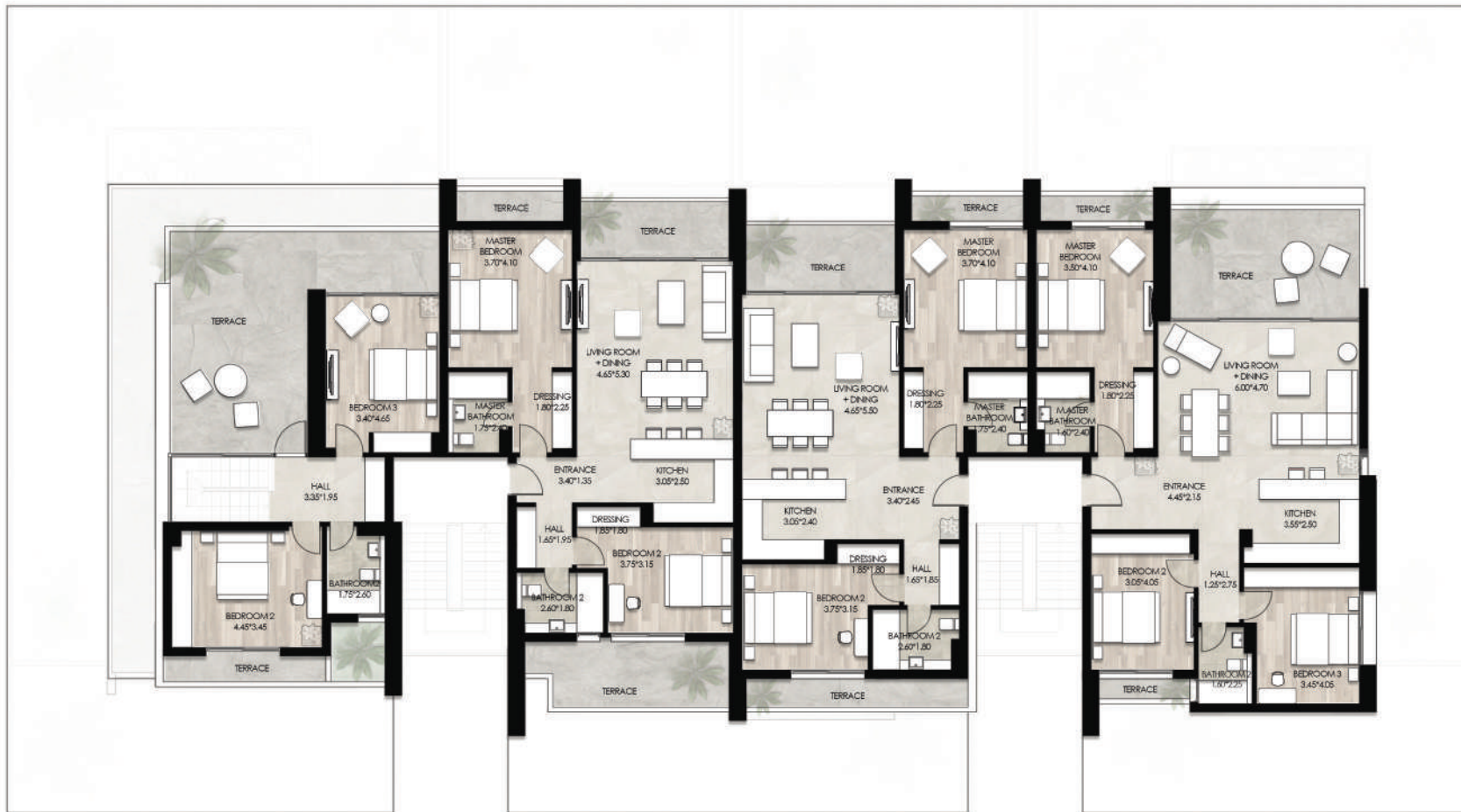
Gross Area 113

Gross Area 116

Gross Area 133

Chalets **Second Floor Plan**

Type 1



Gross Area 111

Gross Area 113

Gross Area 133

Chalets **Street Facade**
Type 2



Chalets **Main Facade**
Type 2



Chalets **Ground Floor Plan**

Type 2



Gross Area 139

Gross Area 139

Chalets **First Floor Plan**

Type 2



Gross Area 120

Gross Area 133

Chalets **Second Floor Plan**

Type 2



Gross Area 117

Gross Area 133

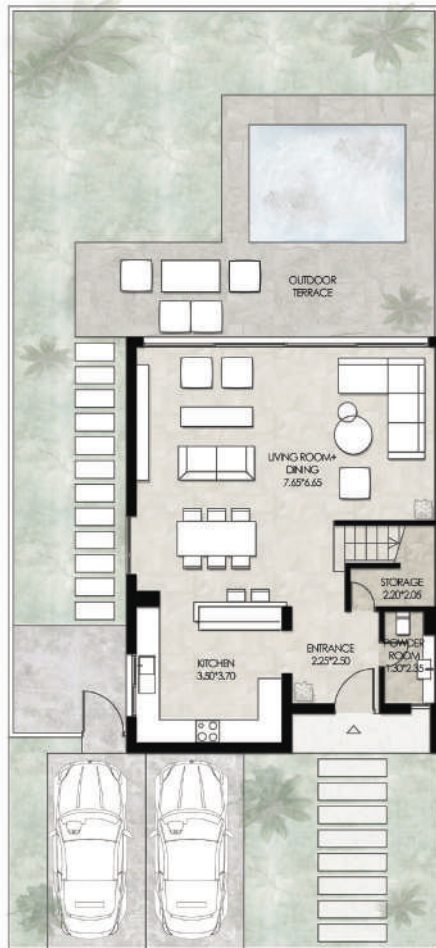
Twinhouse / townhouse
Street Facade



Twinhouse / townhouse
Main Facade



Corner Townhouses/ Twinhouses Floor Plans



Ground Floor Plan



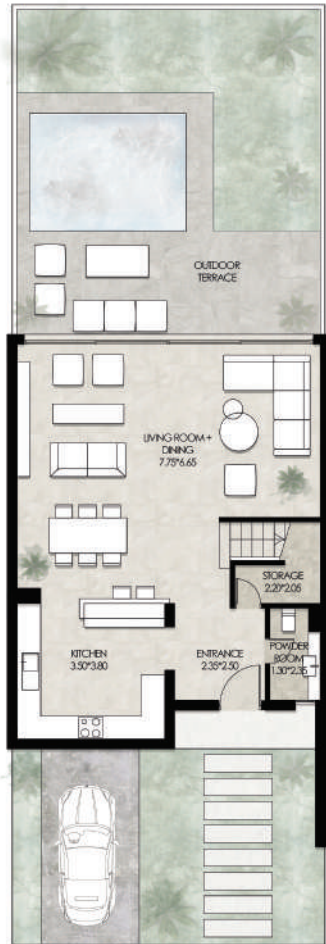
First Floor Plan



Second Floor Plan

Total Internal Area: From 177 to 212 m²

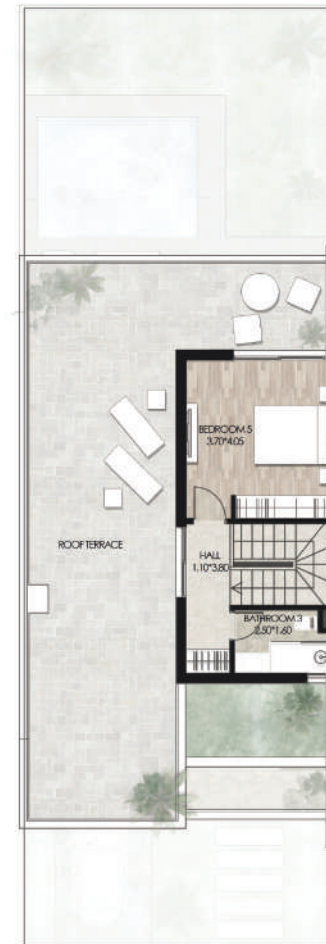
Mid Townhouses/ Twinhouses Floor Plans



Ground Floor Plan



First Floor Plan



Second Floor Plan

Total Internal Area: From 176 to 210 m²

Disclaimer:

- 1- The Masterplan is an artist impression, Actual product may vary.
- 2- All materials and drawings are approximate, information is subject to change without notice.
- 3- The Developer reserves the right to make revisions and changes accordingly.

LAGUNA

SAHL HASHEESH



☎ 16170

🌐 www.tld-eg.com

📷 [thelanddevelopers.eg](https://www.instagram.com/thelanddevelopers.eg)

📘 TLD - The Land Developers

📍 S1 B - 3rd Floor, Downtown Kattamya, New Cairo

📍 AG6, Old Town, Sahl Hasheesh, Red Sea

