

il BAYOU

SAHL HASHEESH

BY  **TLD**
THE LAND DEVELOPERS

30 YEARS OF LISTENING TO WHAT A CLIENT NEEDS

We took it upon us to completely change the game within our vigorously growing real estate industry, making no room for flaws we tend to adopt a lifestyle simply by being unique by adopting a lifestyle where perfection is the only way to go becoming the epitome of success and progress in life.

At **TLD**, we vow to translate your needs into work. We vow to grant our clients an enchanted lifestyle, practical facilities, and mesmerizing projects delivered with sincerity and devotion.

We are driven by our commitment to our clients.



COMMITTED
TO YOU

ABOUT *Sahl Hasheesh*

Benefiting from an outstanding natural setting, Sahl Hasheesh is one of the most alluring spots on the Egyptian coast of the Red Sea.

il Bayou responds above all to context, creating a clear physical and visual connection to the surroundings providing residences a mesmerizing atmosphere of its own and a strong sense of community.





ABOVE

All Blues

ABOUT *il* Bayou

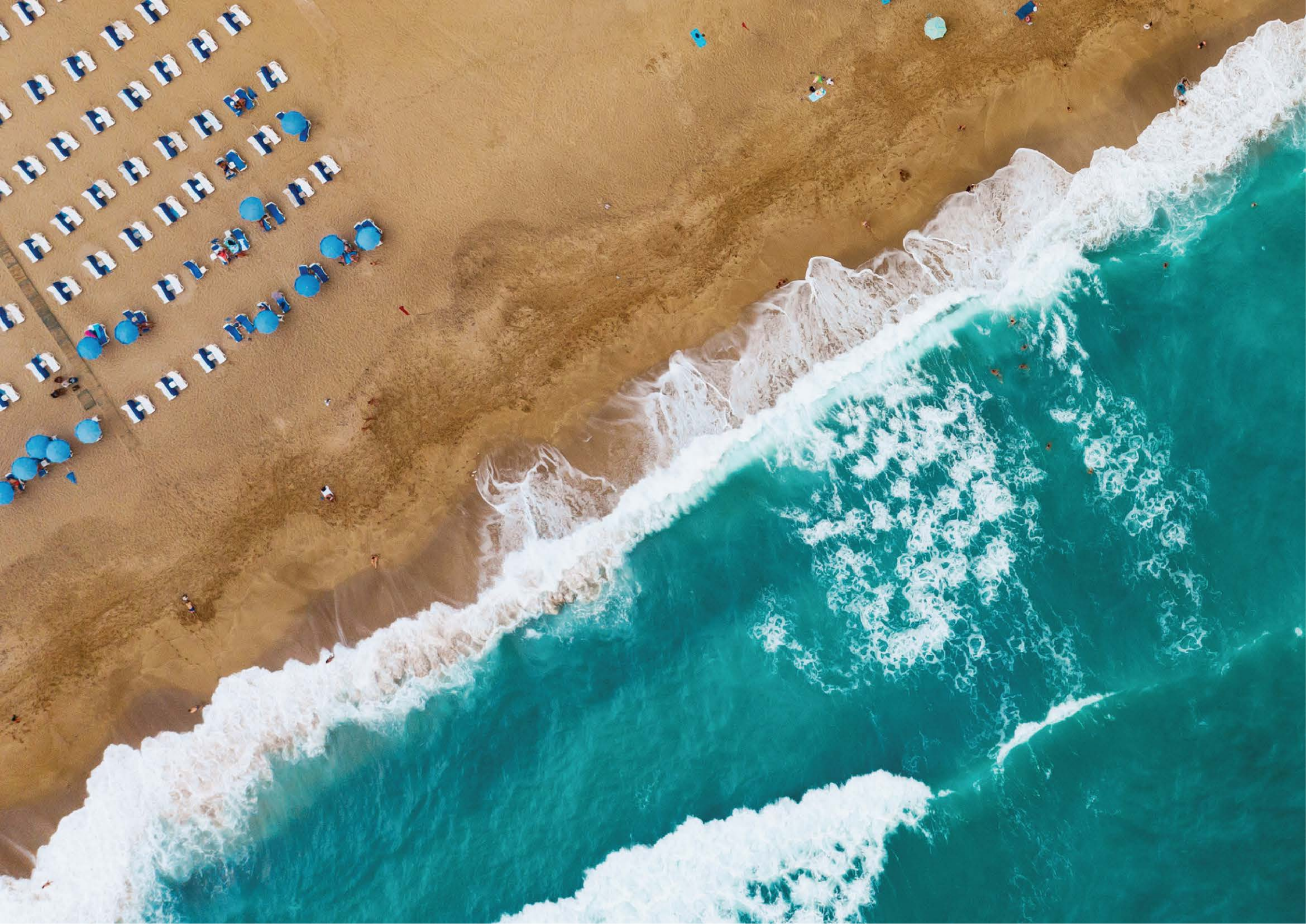
SAHL HASHEESH

il Bayou is a fully serviced compound at Sahl Hasheesh, Red Sea, with a divine, calm, and serene nature that calls for meditation and a state of complete tranquility.

While searching for a summer home that best fits your needs, *il Bayou* delights you with a choice between a total of 85 villas, twin or townhouses, as well as 60 apartments.

The beach is only 350 meters away. Roaming around for venturesome, you can visit Sahl Hasheesh Old Town, which is only 9 minutes away.

A truly dynamic and a unique getaway experience by the sensational Red Sea, that TLD will continue to evolve and grow into.





Nature in its details



An architectural rendering of a modern residential development. In the foreground, two white lounge chairs with wooden frames are positioned on a paved deck, with a folded white towel on one. Beyond them is a large, rectangular swimming pool with a blue mosaic tile bottom. The pool reflects the surrounding environment, including palm trees and modern buildings. In the background, a multi-story building with large windows and balconies is visible. Several people are walking on a paved path that runs alongside the pool. The scene is set in a lush, green environment with many palm trees and other tropical plants. The overall atmosphere is one of a high-end, modern lifestyle.

DESIGN

Concept

With a program of circa 85 villas and 60+ serviced apartments of different typologies, the design revolves around the quality of shared spaces and landscaping values.

The layout is organized around a network of pedestrian-friendly streets combined with a central promenade with lush gardens, rest areas, and water features.

The project extends into a vast green area dominated by water lagoons and promenade that leads directly to the beach.



L35 INTERNATIONAL ARCHITECTURE FIRM

When choosing our partners, we always put your needs as our main essence in every step we take; that's why we chose an international firm that guarantees excellence in the design from a perspective of creative freedom, coupled with technical thoughtfulness and the capacity to master all stages of the project from initial sketches to the finished building.

L35 is an international architecture firm with offices in Barcelona, Madrid, Paris, Milan, Geneva, Miami, Mexico, Bogotá, São Paulo, Santiago, Istanbul and Abu Dhabi.

Where dreams fall into place





PROJECT *Amenities*





Year-round
destination

L35

Designed by
"L35 Madrid"



Serviced
compound



Fully finished villas
with private pools



Serviced & fully-
furnished apartments



Laundry service
& housekeeping



First direct
beach access



Best jetty in
Sahl Hasheesh



Large pool



Pool-side restaurant



Water features



Lush landscape



GYM & SPA



Selective
community

LOCATION



Comfortable walking
distance to beach



6 Min drive to
Sawari Marina



9 Min drive to the
Old Town



15 Min drive to
The Airport



35 Min drive to
Hurghada City center



45 Min drive to
El Gouna

SAHL HASHEESH
OLD TOWN



BEACH JETTY



SAWARI MARINA



MASTERPLAN



STANDALONE

Front View



STANDALONE

Back View



FLOOR *Plans*

STANDALONE (1)



GROUND FLOOR



FIRST FLOOR



PENTHOUSE

FLOOR *Plans*

STANDALONE (2)



GROUND FLOOR



FIRST FLOOR



PENTHOUSE

TWINHOUSE

Front View



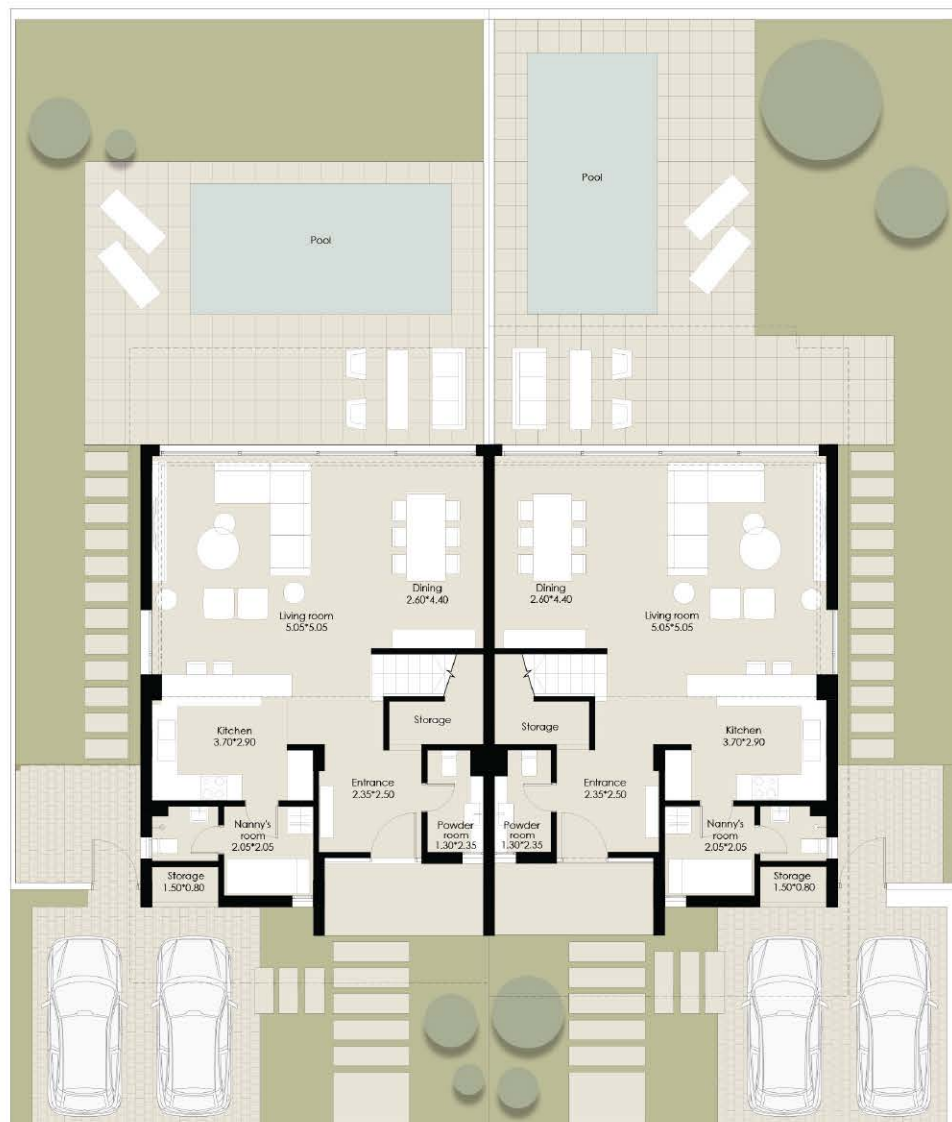
TWINHOUSE

Back View

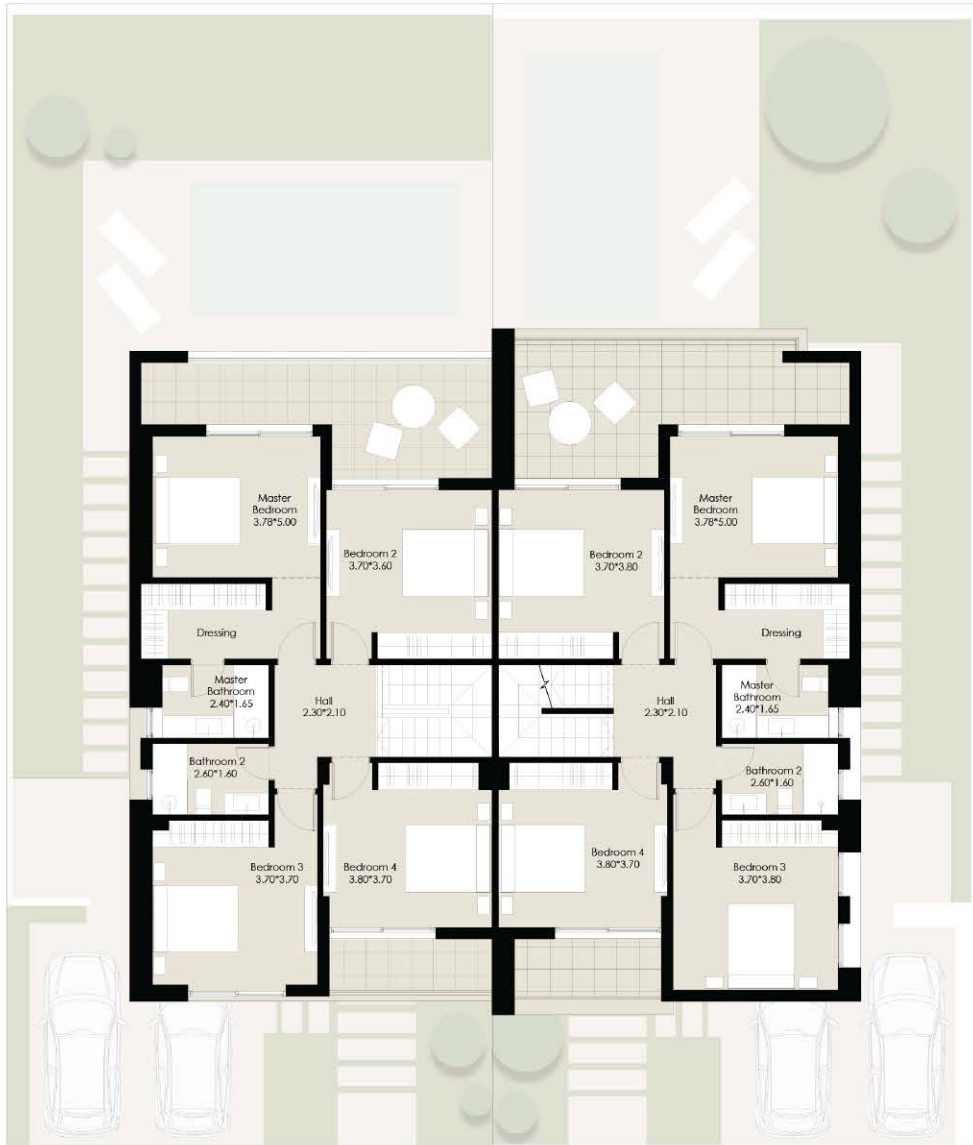


FLOOR *Plans*

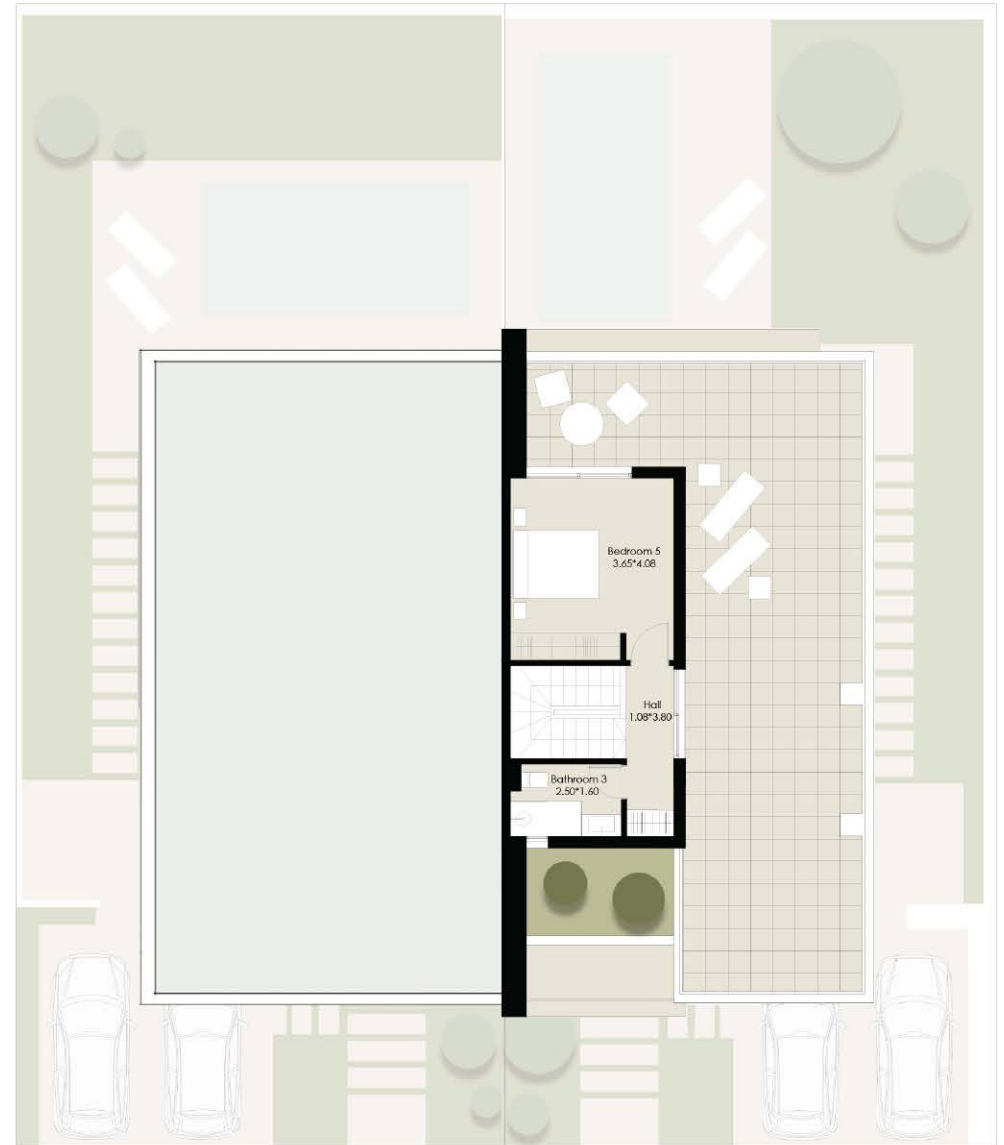
TWIN + PH (1)



GROUND FLOOR



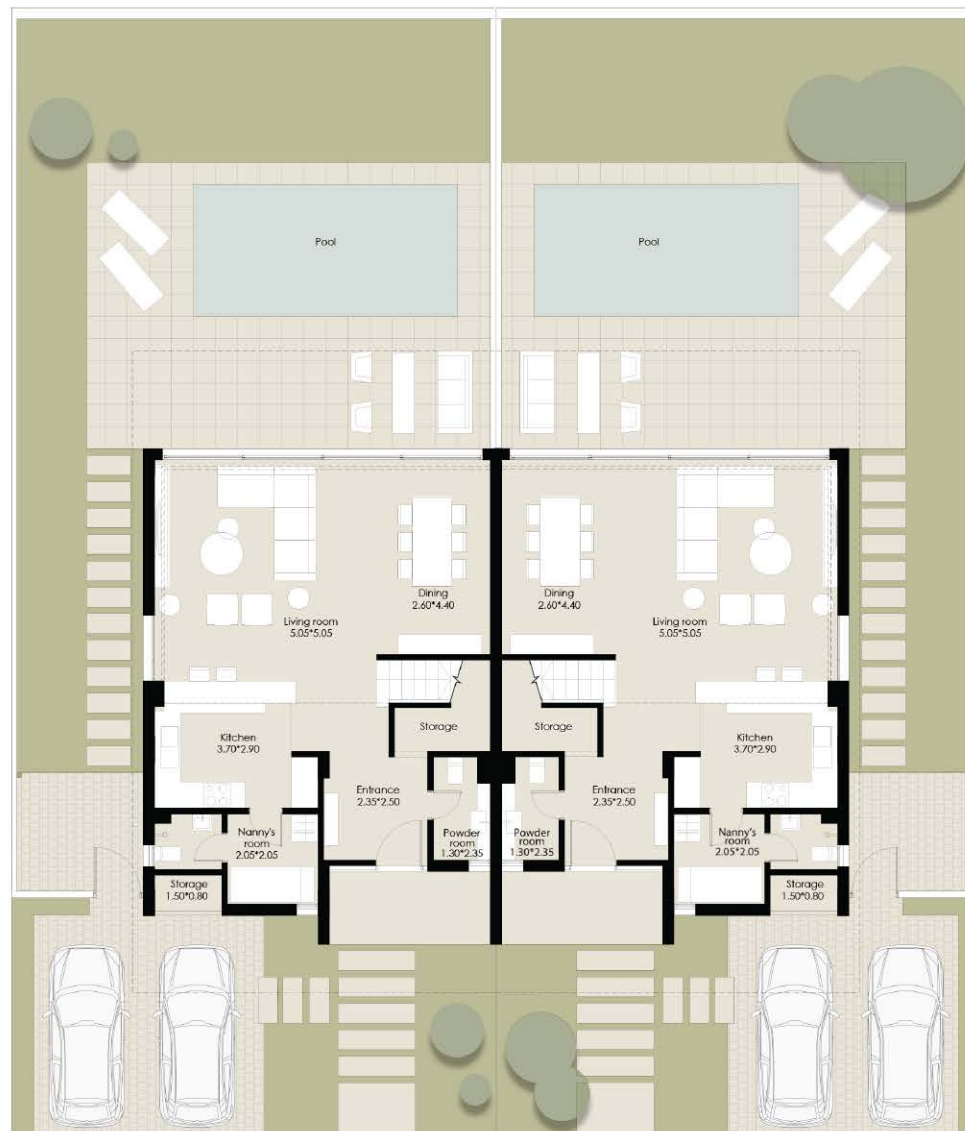
FIRST FLOOR



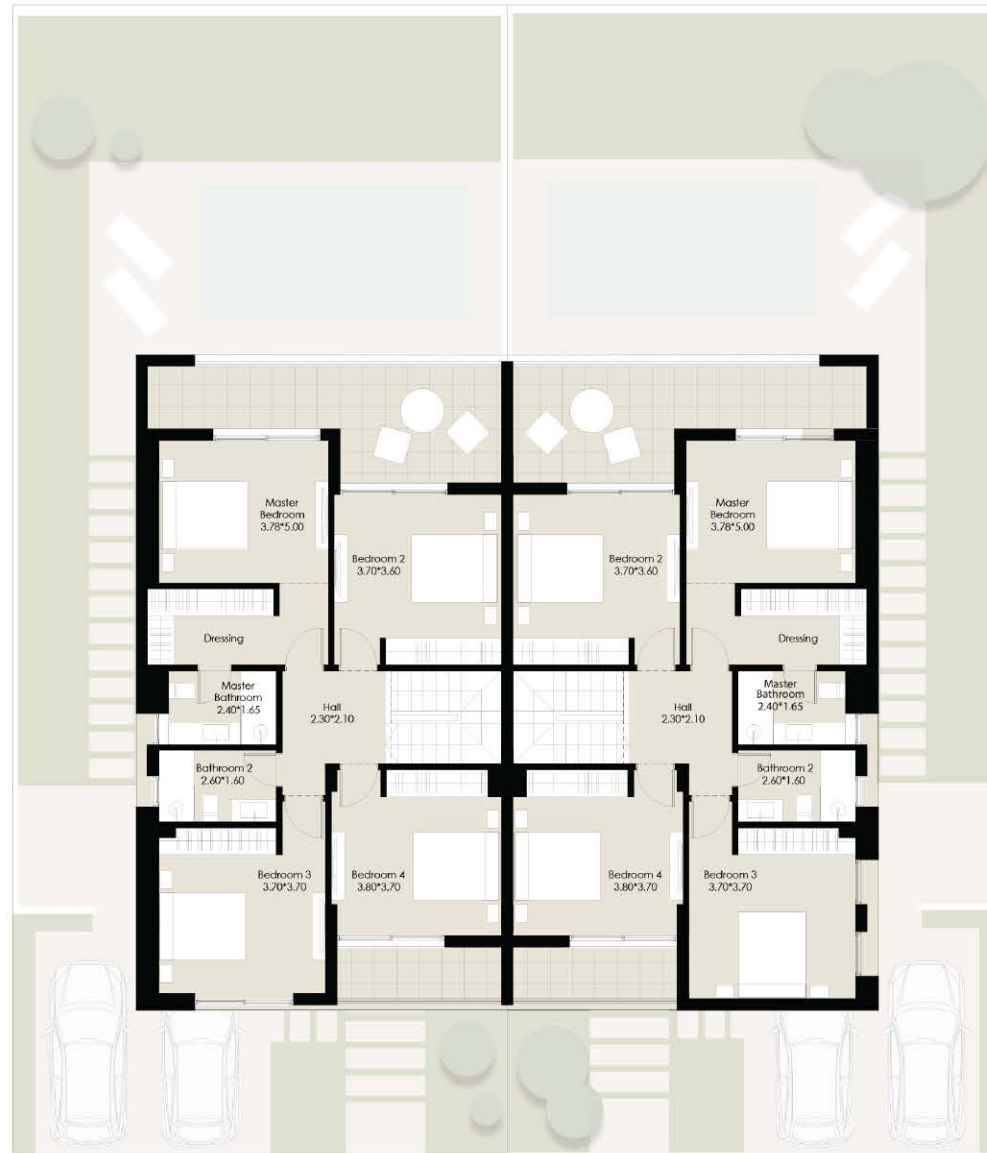
PENTHOUSE

FLOOR *Plans*

TWIN (2)



GROUND FLOOR



FIRST FLOOR

TOWNHOUSE

Front View



TOWNHOUSE

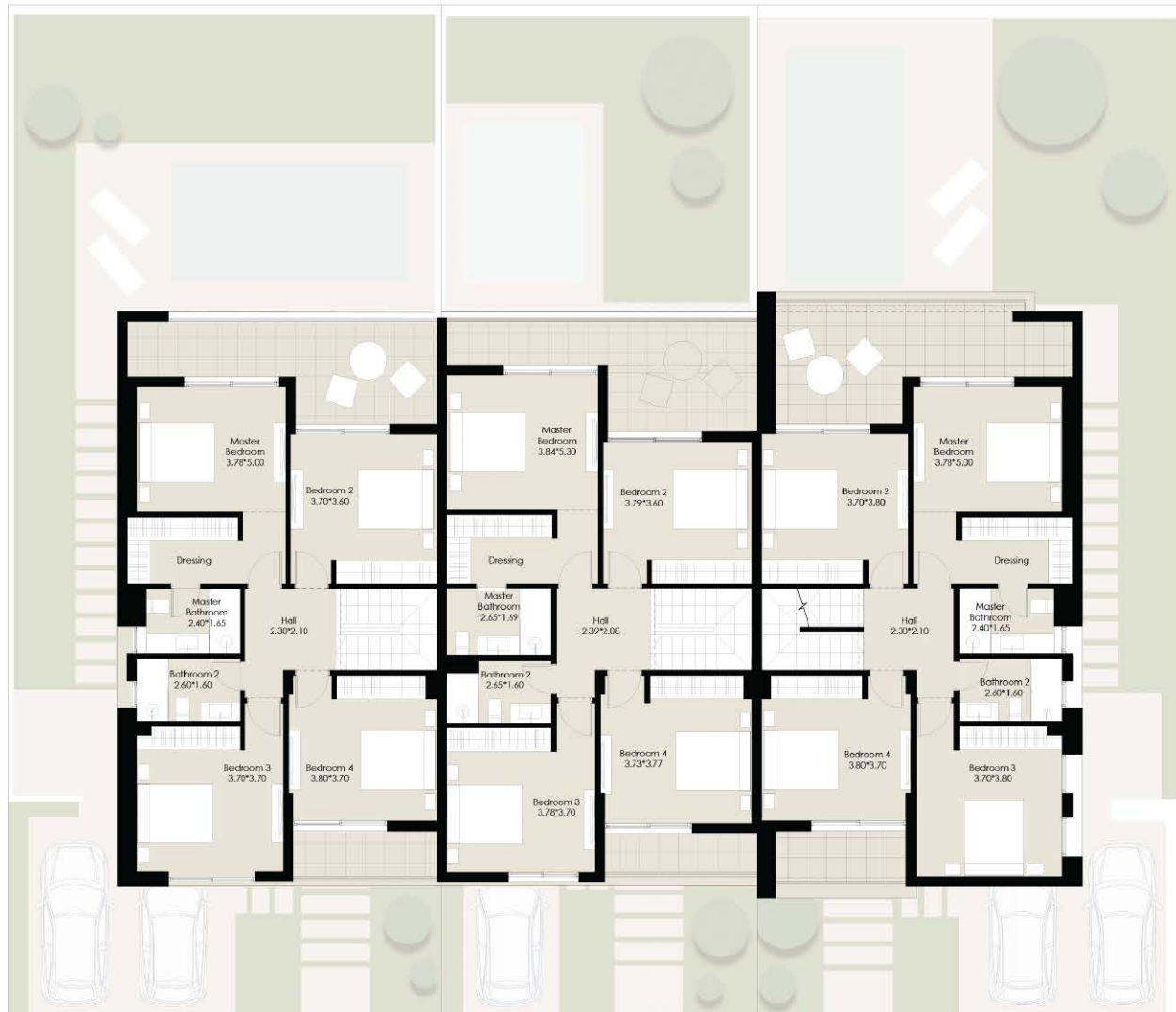
Back View



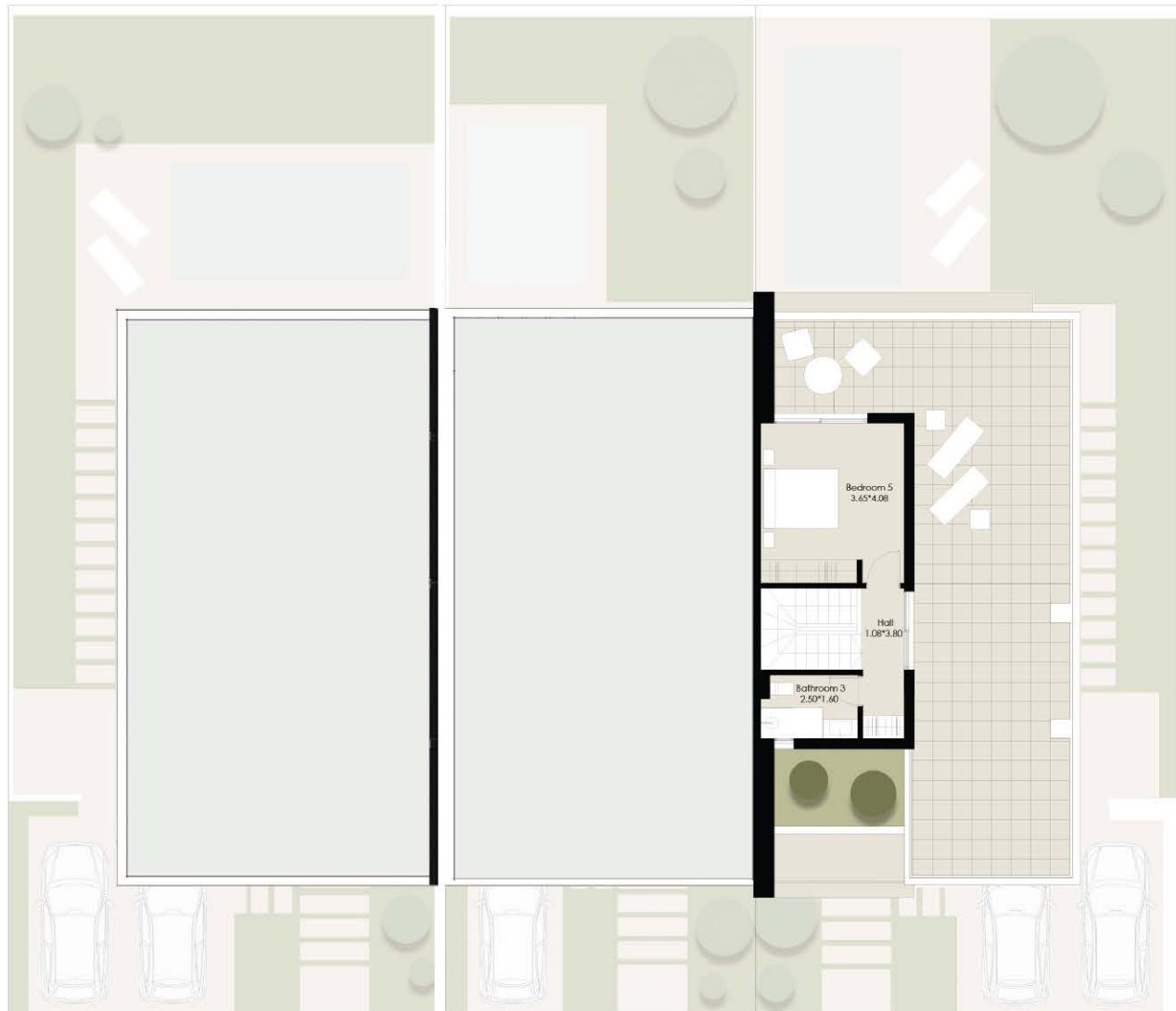
FLOOR *Plans* TOWNHOUSE (1)



GROUND FLOOR



FIRST FLOOR



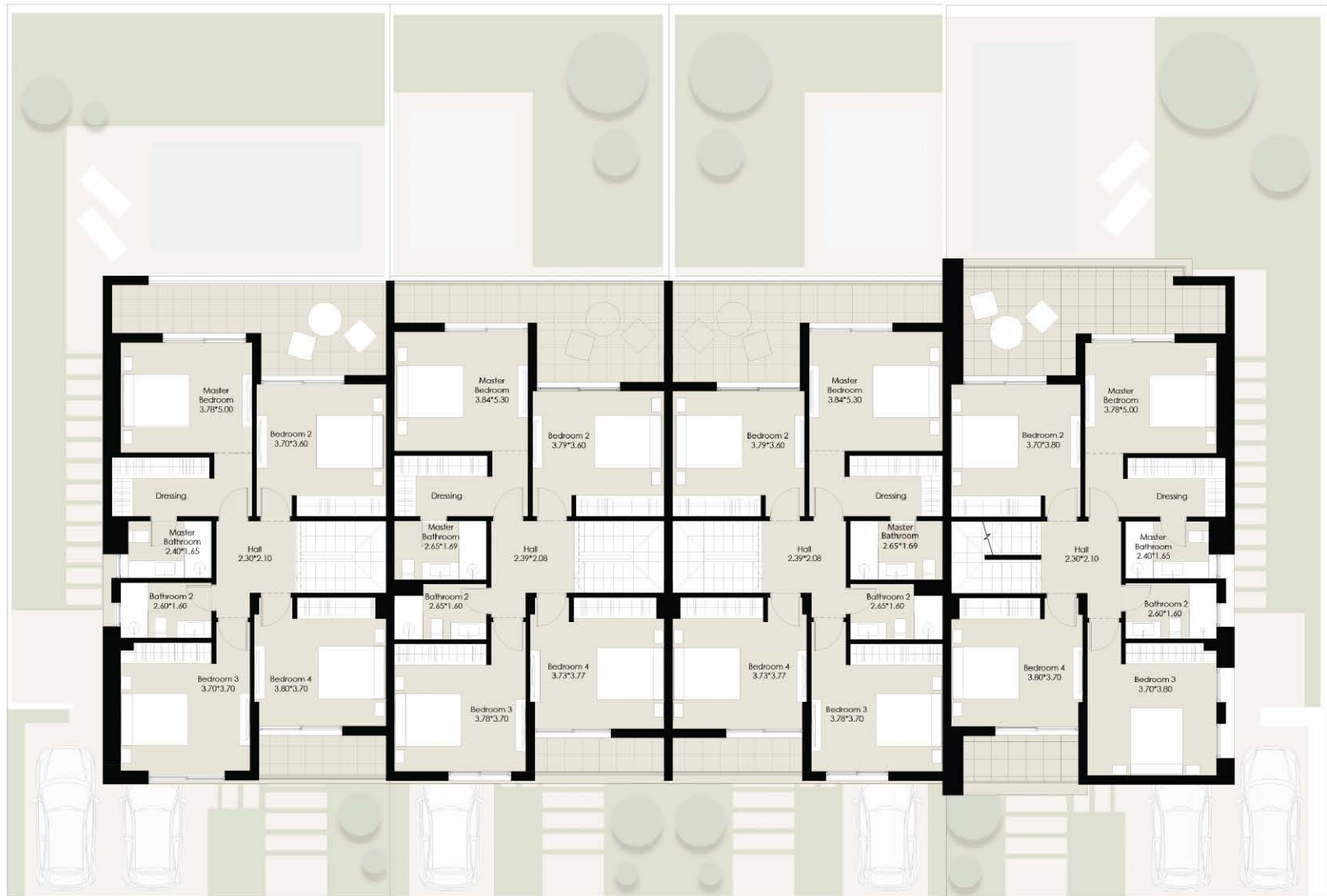
PENTHOUSE

FLOOR *Plans*

TOWNHOUSE (2)



GROUND FLOOR



FIRST FLOOR



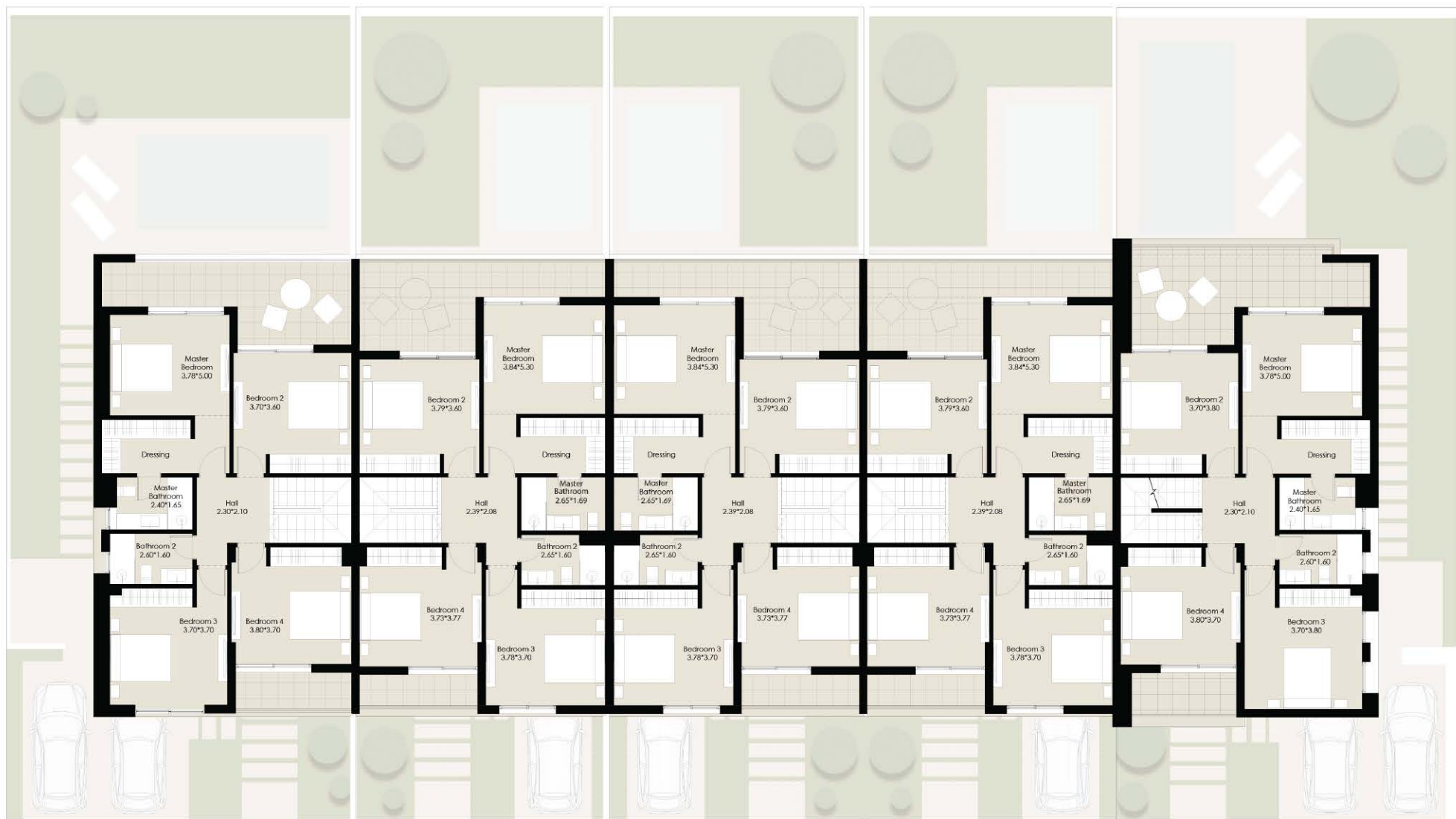
PENTHOUSE

FLOOR *Plans*

TOWNHOUSE (3)



GROUND FLOOR



FIRST FLOOR



PENTHOUSE



Disclaimer:

- 1- The Masterplan is an artist impression, Actual product may vary.
- 2- All materials and drawings are approximate, information is subject to change without notice.
- 3- The Developer reserves the right to make revisions and changes accordingly.



www.thelanddevelopers.com



- S1 B – 3rd Floor, Downtown Kattamya, New Cairo
- AG6, Old Town, Sahl Hasheesh, Red Sea



16170



[thelanddevelopers.eg](https://www.instagram.com/thelanddevelopers)



TLD - The Land Developers